

Thank you for your choice of the Graham Farish Thompson B1 4-6-0 locomotive.

Running in

The mechanism of this model requires running in (without a load) for approximately 1 hour in each direction at moderate speed.

Curves

This locomotive is suitable for use on track with curves of second radius (**approx. 10.5 inches / 260 mm**) or greater

Body removal

The tender shell is secured by the two screws at rear underneath

Alternative tender wheels

Tender wheels without and without traction tyres are included as alternatives to the fitted sets

DCC Decoder fitting to non DCC fitted loco

This model has an 6-pin NMRA/NEM 651 socket in the tender suitable for a decoder with an appropriate plug. Align the decoder with the mark on the decoder to the mark on the socket.

Run in as above using a DC power supply before fitting a DCC decoder

Lubrication

When required, sparingly lubricate the motor bearings using plastic compatible light oil and the gear train with model grease. Suitable lubricants are Bachmann E-Z Lube item 99984 or Woodland Scenics 'HobbyLube' Lite Oil item HL654.

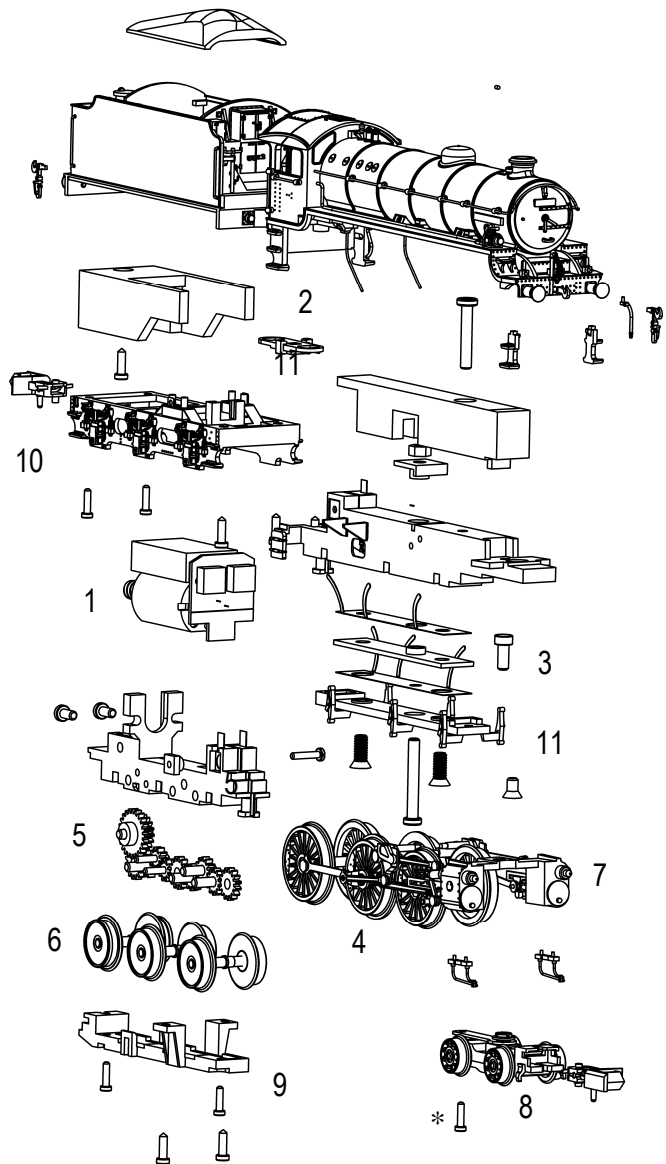
Add-on detail parts.

A cosmetic screw coupling, vacuum brake and steam heat pipe, cylinder drain cocks and front footplate steps fit as shown on the diagram on page 3. The front coupler must be removed to fit the cosmetic coupling and steam heat pipe. **The steps and cylinder drain cocks may foul the bogie on tight curves: please check the operation of the model on your layout before final fitting of these parts. The scale bogie and valve guides are intended for display use only**

Bachmann Europe Plc

Moat Way, Barwell, Leicestershire, LE9 8EY 01455 841756

www.bachmann.co.uk



Alternative from bogie with scale wheels suitable for display only and is secured by indicated screw at front of the driving wheels.

Parts

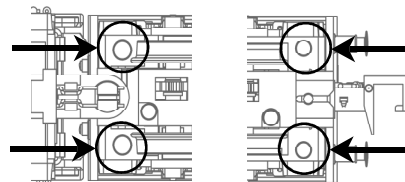
- | | | | |
|---|----------------|----|--------------------|
| 1 | Motor | 7 | Cylinders / motion |
| 2 | Drawbar | 8 | Front bogie |
| 3 | Pickups | 9 | Tender baseplate |
| 4 | Driving wheels | 10 | Tender underframe |
| 5 | Gears | 11 | Loco baseplate |
| 6 | Tender wheels | | |

Replacement parts in retail packs

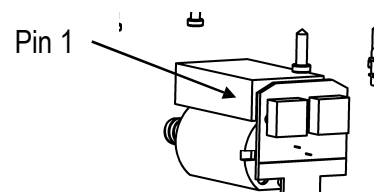
Couplings - item 379-405

Fitting DCC decoder

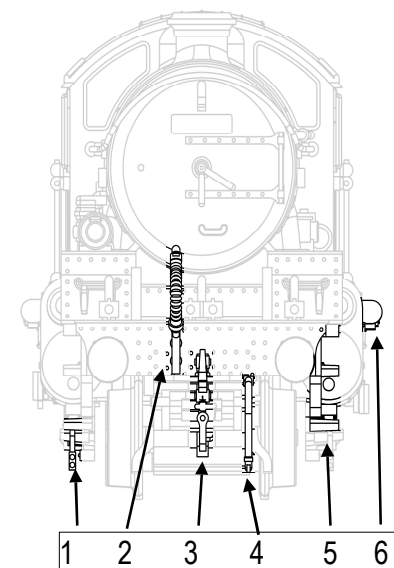
The tender shell is secured by the small screws in each corner of the underside



Carefully remove the blanking board above the motor and replace with a decoder having a NMRA/NEM 651 6-pin fitting eg Bachmann 36-558



Fitting Add on parts



- 1 Cylinder drain cocks (both sides)
- 2 Vacuum brake pipe
- 3 Cosmetic screw coupling
- 4 Steam heat pipe
- 5 Front steps (both sides)
- 6 Scale valve guides (for display only)